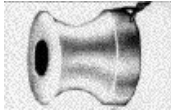


# Otological Ventilation (Tympanostomy) Tubes

## SHEPARD DESIGN

Classic popular grommet design for easy insertion, adequate ventilation and short term duration. Available in Fluoroplastic, Silicone, and Polyethylene. All tubes are blue except for Fluoroplastic (white). Also available with or without wire (for Fluoroplastic).



*With* wire to facilitate easy removal

**1.0mm I.D.**  
**TE-7007-CE**, Fluoroplastic

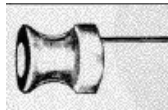
**1.1mm I.D.**  
**TE-7011-CE**, Fluoroplastic



*Without* wire

**1.0mm I.D.**  
**TE-7008-CE**, Fluoroplastic

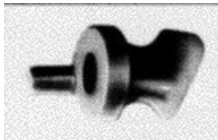
**1.1mm I.D.**  
**TE-7014-CE**, Fluoroplastic



*With* Integral Tail  
**1.0mm I.D.**  
**TE-7010-CE**, Polyethylene

## SHAH DESIGN

Similar to Shepard design with extended tab or wire on outer flange to facilitate insertion. Addition of "Shoehorn"/elongated tongue on inner flange allows smaller incision and easier insertion and helps prevent early extrusion.



**1.1mm I.D.**  
**TE-7016-CE**, *With* Tab Polyethylene

**TE-7018-CE**, *With* Wire Fluoroplastic

## SHEEHY / COLLAR BUTTON DESIGN

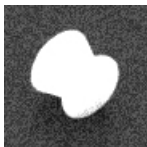


*Without* wire

**1.2mm I.D.**  
**TE-7022-CE**, Fluoroplastic

Classic collar button design with symmetrical flanges. Larger inner diameter reduces chance of blockage. For long-term ventilation in treatment of chronic serious otitis media.

## BEVEL BOBBIN DESIGN



*Without* wire  
**1.14mm I.D.**  
**TE-7029-CE**, Fluoroplastic

Combining the best features of the Baxter Bevel Button and the Reuter Bobbin, the beveled shape resists occlusion and clears easily.



5860-C Hollister Avenue  
Santa Barbara, CA 93117 U.S.A



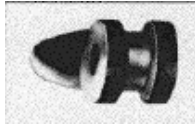
Tel: (805) 967 1153  
Fax: (805) 967 1295



Home: [www.tecfe.com](http://www.tecfe.com)  
Email: [tecfe@tecfe.com](mailto:tecfe@tecfe.com)

## DONALDSON DESIGN

Popular ventilation tube due to its straightforward design which resists extrusion. Silicone material offers elasticity for easy insertion. Available with or without integral tab.



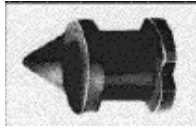
*With tab to facilitate easy removal*  
**1.1mm I.D.**  
**TE-7024-CE**, Silicone



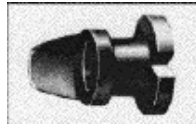
*Without tab*  
**1.1mm I.D.**  
**TE-7025-CE**, Silicone

## PAPARELLA DESIGN

Unique design of notched inner flange facilitates insertion through simple "twist-in" movement. Very stable for long-term implantation. Integral tab for removal with forceps. Available are Type I and Type II. Type II is a long-term design similar to the short-term Type I. Type II has large inner flange allowing easy placement and 1.5mm inner diameter to help prevent blockage.



**Type I**  
*With integral tab*  
**10mm I.D.**  
**TE-7027-CE**, Silicone



**Type I**  
*With integral tab*  
**1.2mm I.D.**  
**TE-7026-CE**, Silicone



**Type II**  
*With integral tab*  
**1.5mm I.D.**  
**TE-7076-CE**, Silicone

## ARMSTRONG DESIGN

Made of polyethylene or fluoroplastic. Beveled inner flange is angled to fit the tympanic membrane and resist premature extrusion. Available are original Plain End Type and Grommet Type with outer flange which helps prevent migration into middle ear. For long-term ventilation.



**Grommet Type**  
**1.1mm I.D.**  
*Short Shaft*  
**TE-7056-CE**, Polyethylene

## T-TUBE DESIGN

Proven to be the most popular long-term tube. The T-flange and long shaft design keep the tube firmly positioned giving the surgeon complete control over length of ventilation time. The silicone material allows soft flanges to collapse easily for introduction through a very small incision and safe and comfortable removal at any time. Tecfen T-tubes can be easily trimmed to adapt to the surgeon's needs. Also features are pre-trimmed T-tubes for convenience.



**Plain End Type**  
**1.1mm I.D.**  
*Pre-trimmed, 8mm Length, 2mm Flanges*  
**TE-7089-CE**, Silicone



**Grommet Type**  
**1.1mm I.D.**  
*Standard, 12mm Length, 4mm Flanges*  
**TE-7091-CE**, Silicone



5860-C Hollister Avenue  
Santa Barbara, CA 93117 U.S.A



Tel: (805) 967 1153  
Fax: (805) 967 1295



Home: [www.tecfe.com](http://www.tecfe.com)  
Email: [tecfe@tecfe.com](mailto:tecfe@tecfe.com)